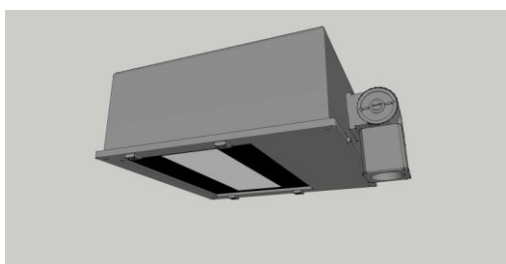


INSTALLATION INSTRUCTION MANUAL

Model number parameter list:

Model	Input Voltage	Power Factor	Frequency	Watt	Input Current max	Weight
STL1-100	100-277V	0.95	50/60HZ	100W	1.0A	7.13kg
STL1-150	100-277V	0.95	50/60HZ	150W	1.5A	7.31kg
STL1-200	100-277V	0.95	50/60HZ	200W	2.0A	7.49kg



APPLICATION ITEMS

1. Introduction

- This LED Tennis light uses the latest in solid state lighting technology for long life, low maintenance, and high efficiency.
- The same as traditional HID lighting.
- An internal power-factor-corrected switch-mode supply allows it to be used from any nominal 100-277V, 50/60Hz AC supply without any variation in light output.
- Suitable for use in the following locations:
 - Ambient Temp: -20~+40°C
 - Wet Locations

Note: Save these instructions for future reference.

2. Installation

Warning:

To avoid the risk of fire, explosion, or electric shock, this product should be installed, inspected, and maintained by a qualified electrician only, in accordance with all applicable electrical codes.

Warning:

To avoid electric shock:

- Be certain electrical power is OFF before and during installation and maintenance.
- Luminaire must be connected to a wiring system with an equipment-grounding conductor.

Warning:

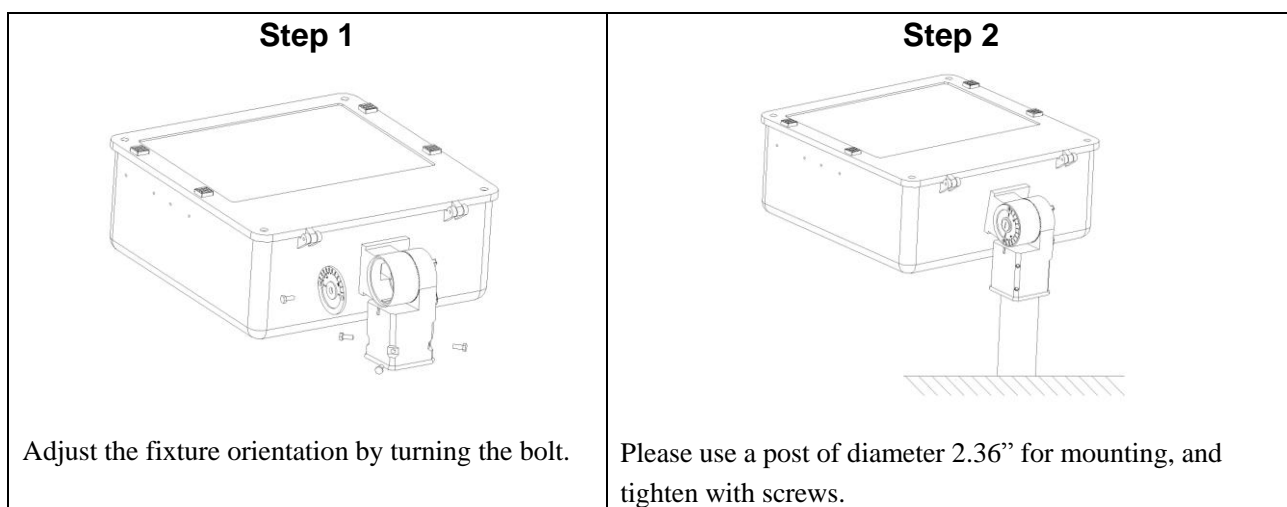
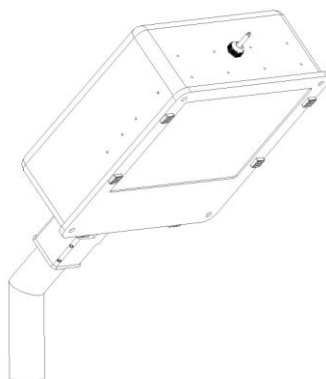
To avoid explosion:

- Make sure the supply voltage is the same as the rated luminaire voltage.
- Do not install where the marked operating temperatures exceed the ignition temperature of the hazardous atmosphere.
- Do not operate in ambient temperatures above those indicated on the luminaire nameplate.
- Keep lens tightly closed when in operation.

For supply connections use wire rated for at least 90°C

Installation Steps:

Refer to the following diagram when you install the fixture. Directly fix to the mounting surface or fix to a post with a knuckle.

1. Mounting with a Slipfitter for Models:**2. Mounting with Arm for Models:**

Please use a post of diameter 2.36 " for mounting. Street lamp installation: the lamp set on the lamp post, and then the two locking nut

After installation, please

- check whether the lighting fixture is firmly fixed.
- check whether wires are connected correctly.
- At last, turn on the power, and check if the lighting fixture works well. If not, please turn off the power and contact with local dealer.